

ENGINE SERVICE

Cylinder Head Service & Engine Block	44-47
Auxiliary Belt	48
Clutch, Gearbox & Exhaust	49-50
Sparkplug & Diesel Injector Service	51
Diesel Injector Service & Removal	52-55
Oil Service	56-57

KEY



DO NOT USE AIR TOOLS



FOR USE WITH PETROL ENGINES



FOR USE WITH DIESEL ENGINES

BELT

FOR USE WITH BELT DRIVEN ENGINES

CHAIN

FOR USE WITH CHAIN DRIVEN ENGINES

Diesel Glow Plug Removal Kits

- Sets of specialist drills and taps for the safe and effective removal of broken / damaged heater plugs
- Four kits available, covering the most popular sizes of heater plugs:
 - M8 x 1.0 / M9 x 1.0 / M10 x 1.0 / M10 x 1.25
- Each set contains precision engineered components, allowing for the removal of broken parts, without damaging the engine block and leaving a clean cut thread for fitting of the replacement heater plug
- Full instructions supplied with each kit

Each Kit Contains:

1. Extractor Socket Set
2. LH Fluted Drill – 2 step
3. LH Threaded Tap
4. Threaded Tap
5. Removal Tool & Impact Adaptor



Available Kits:

Part Number	Size (mm)	Popular Applications
08591000	M8 x 1.0	HDi 1.4 / 1.6, TDV6, New Mercedes CDI
08591500	M9 x 1.0	JTD 1.9 - CDTi 1.9
08592000	M10 x 1.0	HDi 2.0 / 2.2 BMW / Mercedes / VW
08592500	M10 x 1.25	Japanese

08591000 Spare Parts:

- 085910-01 - Extractor Socket Set (Sizes 0,1,2)
- 085910-02 - Special LH 2 step drill 7mm x 150mm
- 085910-03 - LH Spiral Point Tap M6
- 085910-04 - Glow Plug Thread Tap M8
- 085910-05 - LH Extractor M6

08591500 Spare Parts:

- 085915-01 - Extractor Socket Set (Sizes 0,1,2)
- 085915-02 - Special LH 2 step drill 8mm x 180mm
- 085915-03 - LH Spiral Point Tap M6
- 085915-04 - Glow Plug Thread Tap M9
- 085915-05 - LH Extractor M6

08592000 Spare Parts:

- 085920-01 - Extractor Socket Set (Sizes 0,1,2)
- 085920-02 - Special LH 2 step drill 9mm x 180mm
- 085920-03 - LH Spiral Point Tap M7
- 085920-04 - Glow Plug Thread Tap M10
- 085920-05 - LH Extractor M7

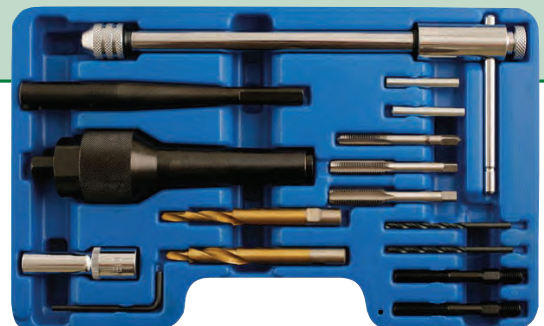
08592500 Spare Parts:

- 085925-01 - Extractor Socket Set (Sizes 0,1,2)
- 085925-02 - Special LH 2 step drill 9mm x 180mm
- 085925-03 - LH Spiral Point Tap M7
- 085925-04 - Glow Plug Thread Tap M10 x 1.25
- 085925-05 - LH Extractor M7

Glow Plug Removal Kit

08593000

- For removing damaged and broken glow plugs from cylinder heads
- Ideal for use where a glow plug has sheared off just below the hex, or flush with the cylinder head
- Removes 8mm & 10mm glow plugs (M8 x 1.0 thread or M10 x 1.0 thread)
- Comprehensive kit includes all necessary adaptors, centering and thread cleaning tools to safely remove the damaged glow plug without damaging the cylinder head



Spare Parts:

- 085930-01 - Ratchet T-Bar
- 085930-02 - Drill Holding Adaptor
- 085930-03 - Puller Outer Housing
- 085930-04 - Force Screw
- 085930-05 - Force Nut
- 085930-06 - Star Socket
- 085930-07 - Allen Key
- 085930-08 - Dual Size Step Drill M8
- 085930-09 - Dual Size Step Drill M10
- 085930-10 - Pilot Drill Centering Sleeves
- 085930-11 - Pilot Drill 3.5mm
- 085930-12 - Tap 1/4"
- 085930-13 - Tap M8
- 085930-14 - Tap M10
- 085930-15 - Puller Adaptor Mandrel

Vibro Impact Glow Plug Remover Kit

085900V2

- For the safe, effective removal of 8mm, 9mm, 10mm, 11mm & 12mm glow plugs
- Uses controlled impact torque to create vibration in order to loosen seized glow plugs
- The Vibro-Impact tool 'loosens' the seized glow plug, making it safe and easy to remove without the risk of broken plugs, and / or damaged cylinder heads
- Includes 4 low-torque settings for controlled torque vibration (10, 20, 30, 40Nm)
- Supplied with special long-reach 8, 9, 10, 11 & 12mm glow plug sockets, long and short extensions and universal joint for ease of access



- This kit is also effective for:

The removal of any small threaded fixings (up to 12mm thread size) e.g.

- Spark Plugs (particularly useful for Ford and Alfa Romeo Twin Spark engines)
- Exhaust manifold studs
- Engine sump fixings



Square Drive	¼"
Max Torque - Right	40Nm
Max Torque - Left	10 / 20 / 30 / 40Nm
Air Inlet	¼"
Air Consumption	250 ltrs / min
Speed	12,000 per min
Air Supply	6.3bar / 90psi

Spare Parts:

- 08590170 - 1/4" Impact Gun
- 08590270 - Universal Joint
- 08590370 - Impact Socket 8mm
- 08590470 - Impact Socket 10mm
- 08590570 - Impact Socket 12mm
- 08595170 - Impact Socket 9mm
- 08595270 - Impact Socket 11mm
- 08595370 - Short Extension
- 08595470 - Long Extension

Glow Plug Socket Set

08593500

- Specially designed sockets for gaining access to the glow plug where the cable restricts access
- Sockets have a lateral slot which goes over the cable attached to the glow plug - No need to disconnect wires from glow plug
- 8mm / 9mm / 10mm sockets
- Applications include: Alfa, Fiat, Saab, Vauxhall / Opel - also some PSA models



Extra Long Glow Plug Socket Set

08597500

- Extra Long Glow Plug sockets (150mm) with universal joint for restricted access
- Designed to grip plug being extracted
- Sizes: 8mm, 9mm, 10mm, 12mm, 14mm, 16mm
- Extra long 150mm & 3/8" Drive
- Includes universal joint for restricted access



Mercedes Diesel Fuel Injection Socket

01515500

- 33 tooth – ½" sq dr
- Special socket for removing and mounting the pressure valve holder on the Diesel Injection Pump
- Outside Diameter - 23.9 mm
- Length - 55 mm
- Internal measurement across the inside of the teeth (Bolt Head Measurement) approx 19.45mm



Applications:

Mercedes Diesel Engine Series: 601, 602, 603, 605, 606, 615, 616, 617

Valve Spring Compressor - Heavy Duty 03800000

- Suitable for use on a wide range of medium and heavy commercial vehicles, buses, agricultural, marine and industrial plant engines
- Reinforced frame made from rust-proofed steel
- Geared hand wheel adjustment
- Supplied with straight & cranked off-set jaws

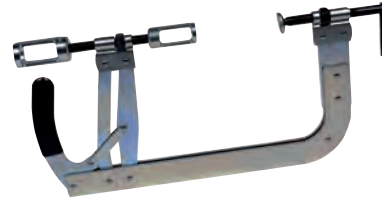


Spare Parts:

- 03801100 - Straight Jaws
- 03801200 - Cranked Offset Jaws

Valve Spring Compressor - Multivalve Engines 03950000

- For the removal of valves on multivalve petrol & diesel engines
- Reinforced frame made from rust-proofed steel
- Supplied with 23mm & 28mm valve spring adaptors



Spare Parts & Optional Adaptors:

- 03950100 - Multivalve VSC Adaptor: 28mm (OD) 21mm (ID)
- 03950200 - Multivalve VSC Adaptor: 23mm (OD) 18mm (ID)
- 03950400 - Multivalve VSC Adaptor: 30mm (OD) 18mm (ID)
Restricted Access & BMW
- 03950500 - Multivalve VSC Adaptor: 21mm (OD) 15mm (ID)
VW Group & Motorcycle

Valve Spring Compressor - OHC Engines 66043000

- For OHC petrol & diesel engines
- Will also fit a wide variety of smaller OHV engines
- Cam action provides parallel lift
- Open collet type jaw provides good visibility for difficult access applications



Valve Spring Compressor - OHV Engines 66021000

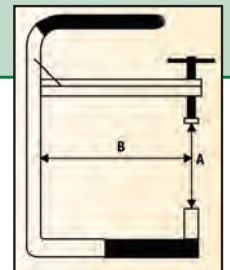
- For the removal of valves on small / medium OHV engines
- Cam action provides parallel lift
- Automatic locking action
- Supplied with straight adjustable width jaws



Valve Spring Compressors Technical Specifications

	A - Jaw (mm)		B - Throat (mm)		A - Jaw (mm)		B - Throat (mm)
	Min	Max			Min	Max	
03800000							
Cranked Offset Jaws	75mm	165mm	245mm				
Straight Jaws	95mm	186mm	245mm				
				03950000	35mm	142mm	150mm
				66021000	70mm	135mm	150mm
				66043000	63mm	129mm	158mm

Note: Dimensions quoted are with tool fully compressed



Valve Grinding Sticks

- Wooden handled valve sticks for grinding and lapping valves

Part Number	Description	Size
66090200	Large Cup - Ideal for HGV, agricultural and industrial plant engines	Single-Ended - 32mm x 224mm
66090300	Medium Cup - Ideal for cars and light commercial vehicles	Single-Ended - 22mm x 224mm
66090400	Small Cup - Ideal for cars, motorcycles and generator engines	Single-Ended - 19mm x 224mm
66090500	Small / Medium Cup	Double-Ended - 19 / 22mm x 224mm



Cylinder Honing Set (13 - 89mm)

02800000

- Complete honing and deglazing set for 13 - 89mm diameter cylinder bores
- Flexible drive shaft for use with air or electric drills
- Supplied with a set of medium grade 220 grit stones
- Suitable for use on brake and clutch cylinders, small bore engine cylinders, motorcycle engines etc



Replacement Stone Sets:

- 02800100 - Grade: Fine Grit: 400
- 02800200 - Grade: Medium Grit: 220
- 02800300 - Grade: Course Grit: 100

Note: Each Stone Set consists of 3 x 19mm stones / 3 x 29mm stones / 3 x 50mm stones and 9 x replacement spring clips

Cylinder Honing Set (50 - 180mm)

02810000

- Large diameter honing and deglazing tool
- Flexible drive shaft for use with air or electric drills
- Supplied with a set of medium grade 220 grit stones
- Suitable for use on large bore engine cylinders from 50 -180mm



Replacement Stone Sets:

- 02810100 - Grade: Fine Grit: 400
- 02810200 - Grade: Medium Grit: 220
- 02810300 - Grade: Course Grit: 100

Note: Each Stone Set consists of 3 x 100mm stones and 3 x replacement cotter pins

Piston Ring Compressor - Ratchet Action

66037000

- Medium capacity piston ring compressor suitable for cars and LCVs
- Spring assisted ratchet type lock complete with square drive key
- Standard 80mm depth, 57 - 125mm capacity



Piston Ring Compressor - Ratchet Action - Large Capacity

66037300

- Large capacity piston ring compressor
- Spring assisted ratchet type lock complete with square drive key
- Standard 80mm depth, 90 - 175mm capacity
- Suitable for Commercial Vehicles, industrial and agricultural engines



Piston Ring Compressor - Ratchet Action - Large Capacity - Long Reach

03220000

- Large capacity, long reach, piston ring compressor
- Spring assisted ratchet type lock, complete with square drive key
- Double-Depth 165mm, 90 - 175mm capacity
- Suitable for Heavy Commercial Vehicles, industrial and agricultural engines



Seal Removal & Replacement Kit

08529500

- Remove & install awkward seals as found on engines, gear boxes, power steering pumps etc
- Reduces risk of surface damage
- Universal coverage for seals 27-58mm diameter
- Includes seal puller, short extracting hooks for easily accessed seals - e.g. on camshafts, long extracting hooks for deep set seals or ones sat on protruding shafts - e.g. crankshafts, seals, selection of bushes, sleeves and mandrels for installing new seals



Spare Parts:

- 085295-01 - Leg Set (Set of 4, 2 x large and 2 x small)

Alternator Free Wheel Pulley Set - 29 Piece

016795V2

- Special set of Spline & Torx Socket Bits for the removal of free-wheel alternator pulleys
- Locks the alternator, allowing the central locking bolt of the pulley to be released
- Selection of 33 tooth reaction nuts and additional adaptors
- Updated 29 piece set covers a wide range of popular applications including:
 - BMW, Citroën, Fiat, Ford, Mercedes, Opel, Peugeot, Porsche, Renault, Toyota, VW Group, Vauxhall, Volvo
- Applications list included - Visit www.sykes-pickavant.com for full details



Spare Parts:

- 016795-01 - 1/2" Bit Socket x M10 - Spline 10 (200mm)
- 016795-02 - 1/2" Bit Socket x M10 - Spline 10 (140mm)
- 016795-03 - 1/2" Bit Socket x M10 - Spline 10 + 33 teeth (110mm)
- 016795-04 - 3/8" Bit Socket x M10 - Spline 10 + 31 teeth (90mm)
- 016795-05 - 1/2" Bit Socket x T50 - Torx 50 + 33 teeth (110mm)
- 016795-06 - 1/2" Bit Socket x T50 (140mm)
- 016795-07 - 1/2" Bit Socket x T50 (200mm)
- 016795-08 - 3/8" Bit Adaptor x 10mm (30mm)
- 016795-09 - 1/2" Bit Adaptor x 10mm (35mm)
- 016795-10 - Hex 10mm bit x M8 - Spline 8 (75mm)
- 016795-11 - Hex 10mm bit x M10 - Spline 10 (75mm)
- 016795-12 - Hex 10mm bit x H8 - Hexagon 8 (75mm)
- 016795-13 - Hex 10mm bit x H10 - Hexagon 10 (75mm)
- 016795-14 - Hex 10mm bit x T40 (75mm)
- 016795-15 - Hex 10mm bit x T50 (75mm)
- 016795-16 - Hex 12mm bit x T50 (64mm)
- 016795-17 - Hex 12mm bit x M10 - Spline 10 (64mm)
- 016795-18 - Multipoint - Hex 15mm x 33 teeth (30mm)
- 016795-19 - Multipoint - Hex 17mm x 33 teeth (30mm)
- 016795-20 - Multipoint - Hex 22mm x 33 teeth (30mm)
- 016795-21 - Hexagon Adaptor - Hex 17mm (35mm)
- 016795-22 - Hexagon Adaptor - Hex 22mm (30mm)
- 016795-23 - Hexagon Adaptor - Hex 21mm x Hex 28mm (35mm)
- 016795-24 - Hexagon Adaptor - Hex 19mm x Hex 28mm (35mm)
- 016795-25 - Hexagon Adaptor - Hex 22mm x Hex 28mm (30mm)
- 016795-26 - Hexagon Adaptor - Hex 17mm x Hex 21mm (30mm)
- 016795-27 - Hexagon Adaptor - Hex 15mm x Hex 28mm (30mm)
- 016795-28 - Hexagon Adaptor - Hex 38mm x 3 pin (17mm)
- 016795-29 - Round Socket - Hex 15mm - 4 pin (30mm)

Flexible Auxiliary Drive Belt Fitting Tool

07740000

- Designed to assist in the fitting of new style alternator / air-con / power steering drivebelts, which have no load adjustment mechanism and are designed to be "stretched" into place
- Guides the belt into the correct position, whilst turning the crankshaft pulley by hand
- Steel guide pins help lock the tool in-situ, whilst the alloy body guides the belt over the edge of the pulley, and supports the load on the belt during the fitting process



Stretch Belt Fitting Tool – Dual Size Pulleys

07744400

- Stretch Belt Tool for Double Pulley applications
- Specially designed two-piece tool for installing and dismantling stretch belts on double pulleys where the two pulleys are of different diameters
- Allows the belt to be installed in one operation
- Ideal tool for Ford Focus applications with double pulley



Sliding Ribbed Pulley Puller

07743500

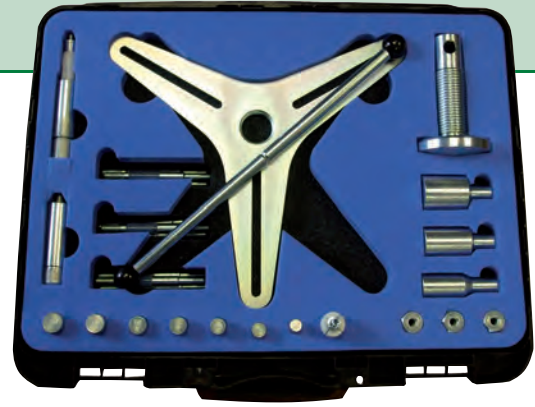
- Pulley puller for grooved belt pulleys
- Pulling arms slide and lock in position for safety and security
- Designed for both servicing and engine rebuild operations
- Universal Applications



Self Adjusting Clutch (SAC) Installer Kit

01360000

- For dis-mounting and mounting SAC assemblies to the flywheel
- Approved Clutch Manufacturer's method for SAC assemblies
- Applications include: Alfa Romeo, Audi, BMW, Fiat, Ford, Mercedes, VW and more
- Wide applications coverage for 120° (3 screw) SAC assemblies
- Allows Pressure Plate to be pre-tensioned before removal and re-fitting of clutch
- Avoids clutch plate distortion and accidental damage due to incorrect fitting and subsequent vibration and shortening of clutch life



Dual Mass Flywheel – Special Tool

081100SP

- Developed in conjunction with LUK, to allow accurate testing of the Dual Mass Flywheels (DMF) unit, whilst it is still mounted on the vehicle, with the gear box removed
- DMF units are designed to dampen out unwanted engine vibration, particularly important on modern high speed diesel engines
- By dampening unwanted vibration, engine and transmission components can be made lighter, in order to maximise the higher power outputs available from the modern diesel engine
- DMF units are designed to last the life of 2 clutch units, assuming correct vehicle usage and normal load conditions
- Includes all the components required to test the DMF including the LUK specific DMF data, instructional CD and Data Wheel which are vital to the correct operation of the kit
- The Data Wheel, provides the specific data, per application, to allow the technician to correctly evaluate the DMF



Spare Parts:

- | | |
|--|--|
| • 081100-01 - Slotted Bar | • 081100-05 - Degree Gauge |
| • 081100-02 - Ring Gear Locking Dogs | • 081100-06 - Degree Gauge Locking Bar |
| • 081100-03 - Ring Gear Locking Dogs Spacers | • 081100-07 - DTI Gauge |
| • 081100-04 - Adaptors & Nuts Set | • 081100-08 - DTI Stand |

5th Gear Puller - Ford

08550500

- Fast and simple method of removing the fifth gear on Ford front wheel drive transmissions before carrying out internal repairs
- The split collar and retaining sleeve ensures a safe and positive location

Applications:

- **B5 Gearboxes:**
Manual 5 speed fifth gear puller (pre -1995)
- **IB5 from 1995 – present:**
Fiesta to date / Ka 1 1996 – 2008 / Focus 1
- **MTX-75:**
Focus 1, 2 & 3 from Zetec onwards to date (inc C Max 1) / Mondeo / Jaguar X Type
- **VXT-75:**
Galaxy 1 1995 – 2006 / Transit FWD & Transit Connect to date



Universal Engine & Gearbox Support

38360000

- Designed to support the engine or gearbox when the engine mountings have been removed - e.g. When replacing timing / drive belts, water pumps etc
- Removes the need for using cranes, transmission jacks etc
- Universal tool designed for all makes of vehicle - No need for costly model specific brackets
- The unit is suspended from the chassis via the support hooks, the engine / gearbox is supported by the support pad and is counter-balanced against the underside of the vehicle by the support arms
- Fully adjustable in all dimensions:
 - Extension: Min 630mm / Max 960mm
 - Support Plate Adjustment: 190mm



Scan the QR code to watch a video of the Universal Engine & Gearbox Support



Spare Parts:

- 38360000-01 - Support Pad & Adjustable Bar

Oxygen (Lambda) Sensor Socket Set

01690000

- Set of 7 specialist sockets for the removal and installation of all common sizes of Oxygen Sensors and Pressure / Vacuum Sensors & Switches
- Suitable for both heated and unheated oxygen sensors

	Part Number	Size (mm)	Depth (mm)	Slot (mm)	Offset (mm)
1	01690100	29	90	8	-
2	01690200	22	90	21	-
3	01690300	27	85	27 (window)	-
4	01690400	22	80	8	-
5	01690500	1 1/16	75	-	-
6	01690600	22	50	10	30
7	01690700	22	30	8	55



Exhaust Pipe Cutter

02180000

- Chain type pipe cutter, ideal for use with exhausts
- Suitable for aluminium, copper, brass, steel
- Capacity: 28 – 68mm diameter



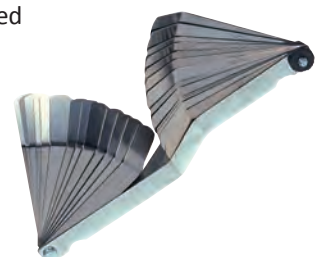
Spare Parts:

- 02180100 - Replacement chain

Professional Feeler Gauges

01640000

- 26 blades cranked
- Thickness Range: 0.005mm - 0.762mm
- 45° angle off-set allows for use where access is restricted



Glow Plug & Spark Plug Thread Recovery Set

01419000

- For the repair of plug threads within the cylinder head
- Repairs thread from the bottom, to minimise the risk of debris entering the engine
- Made from hardened and tempered steel
- Contents: (all sizes have hex drive)
 - M8 x 1.00 – 117mm length
 - M10 x 1.0 – 117mm length
 - M12 x 1.25 – 140mm length
 - M12 x 1.25 – 268mm length
 - M14 x 1.25 – 140mm length
 - M14 x 1.25 – 268mm length
 - M18 x 1.50 – 89mm length



Spark Plug Thread Chaser - 14 / 18mm

01410000

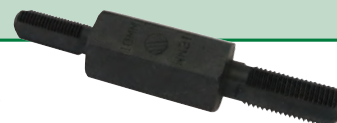
- Cleans and reforms threads in cylinder heads



Spark Plug Thread Chaser - 10 / 12mm

01440000

- Cleans and reforms threads in cylinder heads



Magnetic Extra Long Slim Spark Plug Socket - 14mm

03341600

- 250mm Long Bi-Hex 3/8 Sq Dr
- For deep-seated spark plugs as found on: Citroën, Mini, Nissan, Peugeot and Toyota vehicles
- Ideal for use on Bi-Hex spark plugs



Injector Removal Socket – 21mm

01510100

- For the removal of 21mm Injectors
- Commonly found on Ford Duratorq engines



Injector Alignment Tool

01511500

- A set of tools for aligning the injectors to the fuel lines following repair work
- Specifically required for Ford Duratorq 2.0 / 2.2 / 2.4 Diesel Engines

Applications:
Ford Mondeo / Ford Transit / Jaguar X Type



Electronic Diesel Injector Removal Socket Set

01513500

- Hexagonal socket set for removal of the electrical solenoid from modern diesel injectors
- 1/2" sq dr. x 78mm length
- In most cases, it is necessary to remove the solenoid before attempting to remove the injector body
- Includes 4 x sockets:
 - 25mm Hex – Siemens Injectors - 2.0 Hdi (DW Series) As found on PSA, Ford, Toyota etc
 - 27mm Hex – Siemens Piezo Injectors – 2.0 Hdi Piezo (DW Series) As found on PSA etc
 - 29mm Hex – Bosch type injectors – Bosch Cdi / Hdi engines
 - 30mm Hex – Bosch type injectors – Bosch Renault / Nissan 1.9dCi



Spare Parts:

- 01512500 - 25mm Hex
- 01512700 - 27mm Hex
- 01512900 - 29mm Hex
- 01513000 - 30mm Hex

Diesel Injector Washer Extractor

08581000

- Designed specially to remove the copper injector base seal when it has become stuck in the cylinder head
- Traditionally done using a 'pick' – this tool allows safe and easy removal without risk of damage to the head
- Simple to use – utilises SP's well known "split collet" technology to grip the seal and allow it to be pulled out from the head
- Simple adjustment – expands from 6.5mm to 8.0mm
- No need to use picks, hooks etc when trying to retrieve stuck seals & washers



Scan the QR code to watch a video of the Diesel Injector Washer Extractor



Spare Parts:

- 09580900 - Split Collet 6.5 - 8.0mm

Heavy Duty Diesel Injector Washer Extractor

08581500

- Tapered threaded rod with Slide Hammer, for retrieving washers from the injector seat once the injector has been removed
- Suitable for both modern common rail applications and older applications
- Car / LCV / HGV
- 350mm in length – 500gm Slide Hammer Weight
- The tapered threaded end is screwed into the washer which is stuck in the Injector Seat
- Once the washer "bites", the tool is then used as a slide hammer to remove the washer
- Ideal for use when carbon deposits have completely enclosed the injector seat washer



Diesel Injector Seat Cleaner Set

017500V2

- Cleans injector seats and chambers when changing or reconditioning diesel injectors
- Helps to avoid blow-back due to poorly seated injectors
- Now includes:
 - Removal tool for copper washers
 - Injector blanking plugs to avoid debris entering the cylinders
 - Wire brush cleaning set for chamber walls
 - Centralising stem to improve correct cleaning seating angle



Spare Parts:

- 01750170 - Seat Cleaner No. 1
- 01750270 - Seat Cleaner No. 2
- 01750370 - Seat Cleaner No. 3
- 01750470 - Seat Cleaner No. 4
- 01750570 - Seat Cleaner No. 5
- 017500-02 - Top Cone & Spring Shaft Set
- 017500-03 - Pin & Plug Set
- 017500-04 - Brush Set

Injector Seat Re-Surfacing Tools

- A range of high quality, specialist reamers for injector seat resurfacing
- Each tool features a unique centering probe to ensure correct fitment to the injector seat, is adjustable for depth and has a 17mm hex drive
- Damage to the injector seat and injector edge is avoided

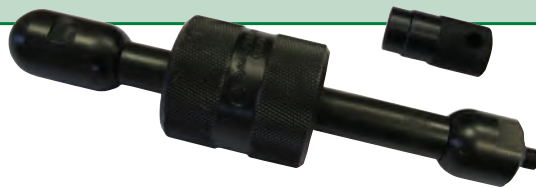
Part Number	Applications
01760200	17mm dia for Delphi injectors
01760300	17mm dia for Siemens injectors
01760400	15.5mm dia for Bosch injectors
01760500	17–19mm dia for Bosch injectors



Diesel Injector Puller

085700V2

- For use with Lucas & Bosch type clamp-down injectors
- Slide hammer mechanism c/w M8, M12 & M14 adaptors
- Universal tool with a wide variety of Car, LCV & HGV applications
- Includes M17 adaptor for GM Vauxhall / Opel injectors (X20DTH / Y20DTH series engines)



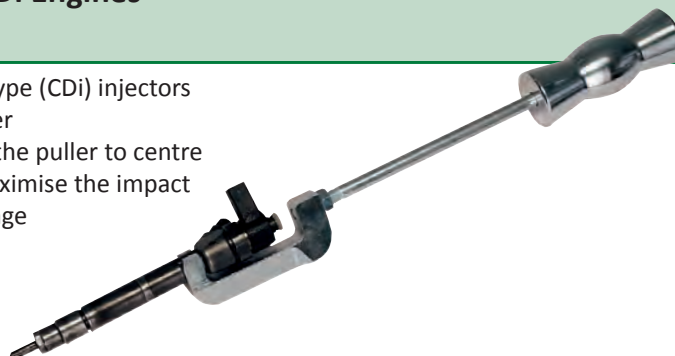
Spare Parts:

- 08570370 - Adaptor M12 / M14
- 08570470 - Adaptor M8
- 08570770 - Adaptor M17

Injector Puller - Mercedes CDI Engines

08550000

- Injector puller designed for Bosch type (CDi) injectors
- Slide Hammer with special CDi puller
- Specially designed contact area on the puller to centre the impact of the slide hammer, maximise the impact force and minimise the risk of damage



Spare Parts:

- 08550170 - CDi Injector Puller
- 08550270 - Slide Hammer Assembly

Combined FSI / PD / Common Rail Injector Puller & Service Tool Kit for VW Group

08565000

Designed for the quick and safe extraction of injection nozzles and unit injector (PD) elements from diesel engines

- Suitable for VW, Audi, Seat and Skoda with direct injection engines and engines with pump-injector units
- For assembling and removal of FSI injectors
- Equivalent to VW OEM T10133 + T10163
- Knurled grips on the puller & assembling tools
- Packed in blow moulded case

Applications:

- 1.4 SDI / TDI
- 1.9 D / SDI / TDI / TDI (PD)
- 2.0 TDI (PD) & (PD 4-Valves)
- 2.5 TDI / TDI (PD)
- 2.7
- 2.8 TDI (PD)
- 3.0 TDI (Common Rail)
- 4.2 TDI (Common Rail)
- 1.4, 1.6, 2.0, 3.0, 4.2 FSI



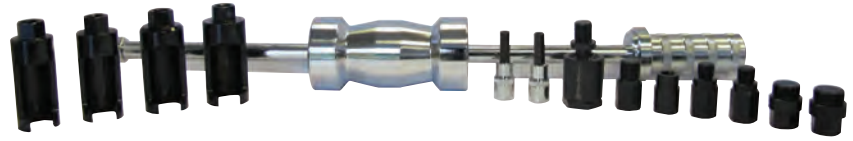
Spare Parts:

- 085650-01 - CRD Injector Removal Tool
- 085650-02 - PD Injector Removal Attachments
- 085650-03 - FSI Injector Removal Attachments
- 085650-04 - Teflon Seal Adaptors
- 085650-05 - Injector Re-fit Tool
- 085650-06 - Slide Hammer Kit

Heavy Duty Slide Hammer Injector Remover Kit

08585000

- Heavy Duty Slide Hammer puller for removal of Bosch, Delphi, Denso and Siemens injectors
- Features a flexible u-joint adaptor for access in restricted areas
- Contains:
 - 6 x Injector adaptors: M14 x 1.5, M16 x 1.0, M17 x 1.0, M20 x 1.0, M25 x 1.0, M27 x 1.0
 - 4 x Injector Solenoid removers: M25, M27, M29, M30
 - 2 x Nozzle Extractors: 6mm Tamperproof: 10mm hex - 7mm Tamperproof: 10mm hex
- Heavy Duty Slide Hammer - Hammer Weight: 5.0kg (Total Weight: 8.0kg)
- Supplied in blow-moulded case



Spare Parts:

Injector Adaptors:

- 08581470 - M14 x 1.5
- 08581670 - M16 x 1.0
- 08581770 - M17 x 1.0
- 08582070 - M20 x 1.0
- 08582570 - M25 x 1.0
- 08582770 - M27 x 1.0

Flexible Adaptor:

- 08582870 - Flexible Adaptor

Injector Solenoid Removers:

- 01512500 - M25
- 01512700 - M27
- 01512900 - M29
- 01513000 - M30

Nozzle Extractors:

- 08585670 - 6mm tamperproof - 10mm hex
- 08585770 - 7mm tamperproof - 10mm hex
- 08585870 - Slide Hammer Assembly

Diesel Injector Remover Kit For Common Rail Diesel Engines

08580000

- Heavy Duty Slide Hammer Kit c/w Injector Removal Adaptor Set
- Designed for use with Common Rail Diesel Engines
- Heavy Duty Slide Hammer (10lbs / 4.5kg) for fast and effective removal of stubborn injectors
- Contains:
 - Injector Removal Adaptors: M14, M16, M17, M20, M25, M27
 - Injector Dismantling Tool: M10 x 1/2" with hole
 - Slide hammer adaptor with locknut (M18)
 - Dismantling tool for removing internal parts of the injector where necessary
- Injector removal adaptors have a special hex design (M27) to allow use of an Impact Wrench to create vibration sufficient to break the injector seal
- Slide hammer adaptor has a 5/8" UNF internal thread for attaching to slide hammer shaft



Scan the QR code to watch a video of the Diesel Injector Remover Kit



N.B. 5/8" UNF is the thread pattern used on most SP slide hammer shafts and the majority of US market slide hammer shafts.

Adaptor kit 08580500 (below) is for users who already possess a slide hammer with a 5/8" UNF threaded shaft.

Spare Parts:

Injector Adaptors:

- 08581470 - M14 x 1.5
- 08581670 - M16 x 1.0
- 08581770 - M17 x 1.0
- 18580970 - Dismantling Tool
- 08582070 - M20 x 1.0
- 08582570 - M25 x 1.0
- 08582770 - M27 x 1.0

Injector Removal Set - Adaptor Kit only

08580500

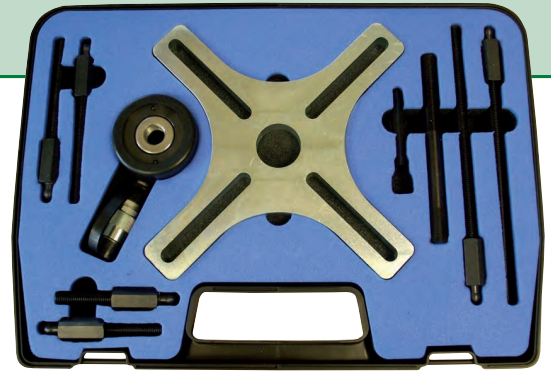
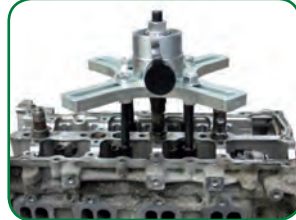
- For use with an existing slide hammer with 5/8" UNF threaded shaft
- Contains:
 - Injector Removal Adaptors: M14, M16, M17, M20, M25, M27
 - Injector Dismantling tool: M10 x 1/2" with hole
 - Slide hammer adaptor with locknut (M18)



Hydraulic Injector Puller System Kit

18580000

- A unique concept for the removal of stubborn injectors
- Provides controlled force to aid the removal of seized injectors, where there is insufficient access for traditional slide hammers
- Uses a multi-position frame, with adjustable legs of different lengths, and a selection of mounting adaptors, to allow alignment of the tool with the injectors on a wide variety of modern diesel engines
- The combination of variable leg lengths, and selection of the appropriate adaptor for the cylinder head, allows the tool to be correctly positioned on most cylinder heads
- Supplied with injector adaptors for most modern injector types:
M14, M16, M17, M20, M25, M27
- Includes instructional CD



Scan the QR code to watch a video of the Hydraulic Injector Puller System Kit

Spare Parts:

- | | | |
|-----------------------------------|---|---|
| • 08581470 - M14 Injector Adaptor | • 18580270 - Support Legs 50mm (4) | • 18580970 - Hex Injector Strip Down Tool |
| • 08581670 - M16 Injector Adaptor | • 18580370 - Support Legs 100mm (4) | • 18581070 - Centre Spindle Short M18 |
| • 08581770 - M17 Injector Adaptor | • 18580470 - Support Legs 200mm (4) | • 18581370 - Centre Spindle Long M18 |
| • 08582070 - M20 Injector Adaptor | • 18580570 - 17mm Hex Head Bolt Mountings (4) | |
| • 08582570 - M25 Injector Adaptor | • 18580670 - 19mm Hex Head Bolt Mountings (4) | |
| • 08582770 - M27 Injector Adaptor | • 18580770 - Concave Head Bolt Mountings (4) | |
| • 18580170 - Mounting Frame | • 18580870 - Tapered Cone Head Bolt Mountings (4) | |

M9R Renault Kit for Hydraulic Injector Puller (above)

18582500

- Useful additional plate and posts when working on M9R engines
- Allows direct application of pulling force
- Applications:
Renault / Nissan / GM – Dci 2 litre engines (M9R)



PSA Adaptor Plate for Hydraulic Injector Puller (above)

18583000

- A bespoke add on kit for use on PSA 2.0 & 2.2 litre HDi diesel engines
- Allows precise and speedy set up ensuring correct tool alignment for the tricky task of injector release on troublesome engines
- Contents:
- Plate and Support Legs



Hydraulic Hand Pump

20017000

- Lightweight aluminium bodied hand pump fitted with gauge, hydraulic hose and 3/4" hydraulic coupler
- 2 Speed, 10,000psi
- Supplied in steel storage case



'Vibro-Impact' Air Hammer

90206000

- A unique concept to aid the removal of seized parts
- The 'Vibro-Impact' system allows for the controlled application of force via an air powered Impact Hammer
- Allows the operator to control and gradually increase the force being applied, in order to loosen seized components
- Ideal as a starting procedure before using the Hydraulic Injector Puller - 18580000 (above) as loosens carbon deposits around the injector



Refer to Page 133 for further details

Strap Type Oil Filter Remover - For all filters up to 300mm diameter

03860000

- Multi-purpose strap wrench, ideal for all oil filters up to 300mm circumference
- Range: 20 to 300mm diameter
- Strap Length: 1 metre long & 40mm wide
- Strong steel shank and polyester strap
- Self tightening band designed for fast and secure filter removal
- Double ended 13/16" hex c/w 3/8" & 1/2" sq. dr



Spare Parts:

- 03860500 – Replacement Strap

Heavy Duty Strap Wrench

015500V2

- Multipurpose, heavy duty strap wrench, ideal for HGV oil filter removal and industrial applications
- Range: 50 to 275mm diameter
- Strong cast iron handle for exerting high leverage, with polyester webbing strap



Spare Parts:

- 015512V2 - Replacement Strap

Adjustable Oil Filter Remover - 3 leg

03810000

- Spider-type wrench, c/w geared legs which automatically tighten as the force is applied
- Range: 62 to 93mm diameter
- 3/8" sq. dr c/w with adaptor for 1/2 sq.dr. and/or 19mm hex



Adjustable Band Type Oil Filter Remover - LCV / HGV

03830000

- Band type, adjustable, non-stretch steel band with die-cast screw mechanism
- Range: 110 to 155mm diameter for LCV / HGV applications



Spare Parts:

- 03830100 – LCV / HGV Replacement Band

Adjustable Band Type Oil Filter Remover - Car / LCV

03840000

- Band type, adjustable, non-stretch steel band with die-cast screw mechanism
- Range: 66 to 100mm diameter for Car / LCV applications



Spare Parts:

- 03840100 – Car / LCV Replacement Band

Heavy Duty Chain Type Oil Filter Remover

03890000

- Heavy duty leaf type chain
- Range: 25 to 150mm diameter
- Ideal for HGV, plant and industrial applications, as well as Cars / LCV's etc
- 1" hex or 1/2" sq. dr



Oil Filter Wrench - Belt Type

03875000

- Twist mechanism to adjust belt
- Range: 65 to 105mm diameter
- Soft grip handle



Low Profile Oil Filter Socket Set
03905000

- Set of six oil filter sockets covering a wide range of manufacturers including those fitted with Mann, Mahle and Knecht oil filters
- Chrome Vanadium sockets – 3/8 sq dr
- Includes sizes: 24, 27, 32, 36, 38, 42mm
- Applications include:
BMW Mini, BMW, Mercedes-Benz A Class, Vauxhall Vectra 2.0, Astra-G, Corsa-B, Zafira, Ford, Volkswagen VR6, Audi
- VW Group diesel engines fitted with Mann, Mahle & Knecht filters


Sump Plug Key Set - 21 Piece
01485000

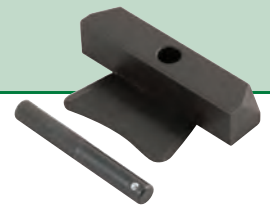
- Suitable for sump plug, engine, gear box, back axle applications
- Contents include:
 - 10mm (XS10) Square female (BMW, Ford, Renault, Toyota Gearbox / Differential)
 - M16 Spline tamperproof (VW Group Gearbox)
 - 10mm Triangular (Renault)
 - T45 Torx
- 3/8" sq drive c/w sliding T-Bar
- Supplied in moulded plastic case


Spare Parts:

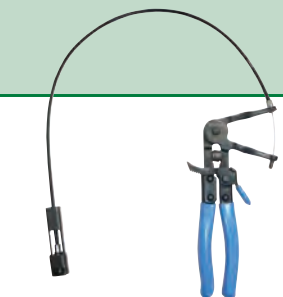
- | | | |
|---------------------------|----------------------------------|-----------------------------------|
| • 014850-01 - 7mm square | • 014850-08 - 10mm square female | • 014850-15 - 13mm hex |
| • 014850-02 - 8mm square | • 014850-09 - 5/16" square | • 014850-16 - 14mm hex |
| • 014850-03 - 10mm square | • 014850-10 - 3/8" square | • 014850-17 - 17mm hex |
| • 014850-04 - 11mm square | • 014850-11 - 8mm hex | • 014850-18 - M16 spline |
| • 014850-05 - 12mm square | • 014850-12 - 9mm hex | • 014850-19 - 10mm triangular |
| • 014850-06 - 13mm square | • 014850-13 - 10mm hex | • 014850-20 - T45 torx |
| • 014850-07 - 14mm square | • 014850-14 - 12mm hex | • 014850-21 - 3/8" sq drive t-bar |

Sump & Gasket Joint Separator
01487500

- Breaks seals on engine sumps, transmissions or any difficult to separate gasket joints easily
- Blade width 48mm – manufactured from specially hardened steel
- Insert the knurled handle into the separator and tap into joint with a hammer


Flexible Hose Clamp Tool
03240000

- Universal hose clamp tool for installation and removal of 'elastic' hose clamp collars
- Remote operation with rigid cable
- Suitable for self-tightening collars from 18 - 54mm (length)
- Patented micro-tooth ratchet and pawl mechanism


Heavy Duty Hose Clamp Plier
03250000

- Specially designed for releasing and refitting re-usable hose clips


Protective Seat Cover - Black
05162600

- 100% Nylon Seat Cover for protection of seats during service / maintenance work
- Grease and water resistant
- Fully washable
- Universal size - Fits most car / van seats



HYDRAULIC INJECTOR PULLER SYSTEM KIT

UNIQUE CONCEPT FOR THE REMOVAL OF STUBBORN INJECTORS

SEE PAGE 55

